



IP RATED DOWNLIGHTS

ZETAN 5

design: Roberto Mantovani

Supply current
Courant d'alimentation
Corriente de alimentación

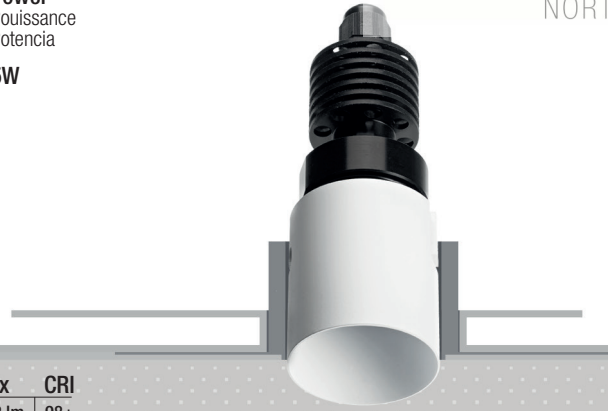
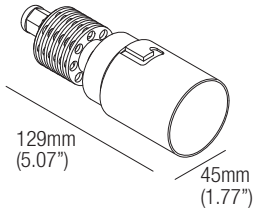
250mA (V_f 18V)

Power
Puissance
Potencia

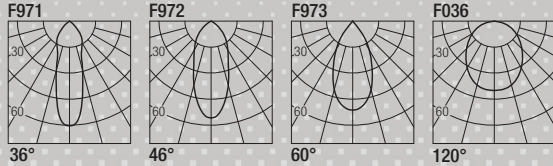
5W

FLEXALIGHTING

NORTH AMERICA



Photometric diagrams



CCT	Flux	CRI
2700K	492 lm	98+
3000K	521 lm	98+
3500K	542 lm	98+
4000K	563 lm	98+

Code Construction

Construction du code produit
Construcción del código de producto

ZN5 | XX | 9 | X | X |

ZN5	XX	Color Temp. Température couleur Temperatura de color	9	X	Finishing Finitions Acabados	X	Beam angle Angle de faisceau Ángulo del haz
		24 2400K 27 2700K 30 3000K 35 3500K 40 4000K CU Custom Personnalisée Personalizado			B White Blanc Blanco N Black Noir Negro C Custom Personnalisée Personalizado		S 36° M 46° W 60° X 120°

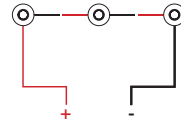
Drivers (Remote)

Alimentateurs
Alimentadores

Static White	Phase / 0-10V (Dual Dimming)	
250mA	CCPRO10-A Min. 1 Max. 2	CCPRO40-A Min. 1 Max. 3

Series wiring

Câblage en série
Cableado en serie



For other driver options -
including Lutron, Dali and DMX -
please consult factory

LOD5

Low luminance louvre
Filtre basse luminance
Filtro de baja luminancia



Note: the filter must be ordered together with the lighting fixture.
Note: le filtre doit être commandé en même temps que l'appareil
Nota: el filtro debe pedirse junto con la luminaria

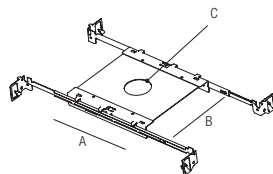
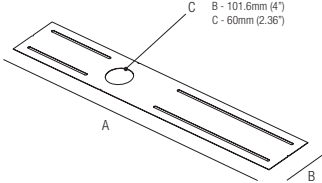
T-Bar Installation

R02060
Mounting Plate
with 60mm Hole

A - 203.2mm (8")
B - 203.2mm (8")
C - 60mm (2.36")

MP-R060
Mounting Plate
with 60mm Hole

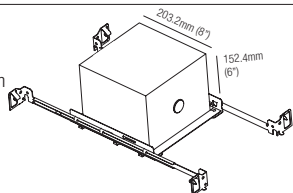
A - 609.6mm (24")
B - 101.6mm (4")
C - 60mm (2.36")



IC Housings

IC086R02060
Recessed Box for
Insulated Ceiling with
60mm Hole

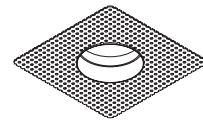
AT086R02060
Air Tight Recessed Box
for Insulated Ceiling with
60mm Hole



Accessories - Accessoires - Accesorios

ZTC05U

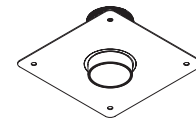
**Plasterboard
recessing frame**
Boîtier d'encastrement
pour plaques de plâtre
Cajetín para placas de yeso



Hole Cut:
60mm
(2.36")

ZTC05U.BMK

Backmount frame
Pierre/bois montage arrière
Roca/madera montaje trasero



Hole Cut:
51mm (2")

Optionals - Accessoires - Accesorios

DCVI.B.1

24VDC Constant Voltage to
Constant Current Converter
0-10V / Phase / Dim to Warm
Compatible, 13W

