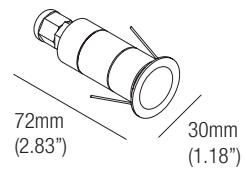


TYTUS

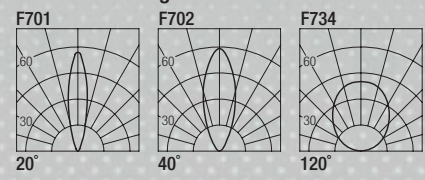
design: Roberto Mantovani

Supply current
Courant d'alimentation
Corriente de alimentación
350mA (V_f 2.9V)

Power
Pouissance
Potencia
1W



Photometric diagrams



CCT	Flux	CRI
2700K	81 lm	93
3000K	81 lm	93
3500K	100 lm	93
4000K	107 lm	93

Code Construction

Construction du code produit
Construcción del código de producto

TYU | **X** | **XX** | **X**

TYU	X Beam angle Angle de faisceau Ángulo del haz	XX Color Temp. Température couleur Temperatura de color	X Finishing Finitions Acabados
	1 20°	27 2700K	B White Blanc Blanco
	2 40°	30 3000K	N Black Noir Negro
	9 120°	35 3500K	K COR-TEN
		40 4000K	C Custom Personnalisée Personalizado
		CU Custom Personnalisée Personalizado	

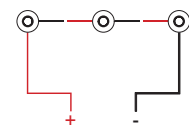
Drivers (Remote)

Alimentateurs
Alimentadores

Static White	Phase / 0-10V (Dual Dimming)		
350mA	<table border="1"> <tr> <td>CCPR010-A Min. 1 Max. 9</td> <td>CCPR040-A Min. 1 Max. 18</td> </tr> </table>	CCPR010-A Min. 1 Max. 9	CCPR040-A Min. 1 Max. 18
CCPR010-A Min. 1 Max. 9	CCPR040-A Min. 1 Max. 18		

Series wiring

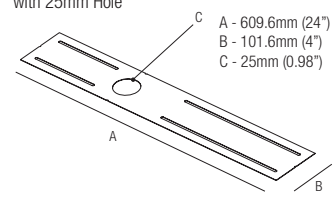
Câblage en série
Cableado en serie



For other driver options - including Lutron, Dali and DMX - please consult factory

MP-R025

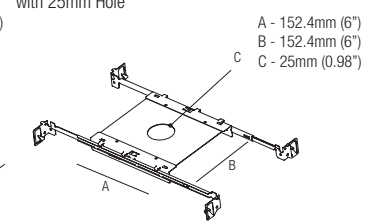
Mounting Plate with 25mm Hole



T-Bar Installation

R01025

Mounting Plate with 25mm Hole



IC Housings

IC064R01025

Recessed Box for Insulated Ceiling with 25mm Hole

AT064R01025

Air Tight Recessed Box for Insulated Ceiling with 25mm Hole

