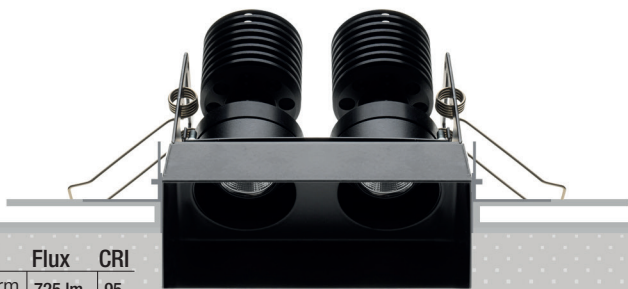
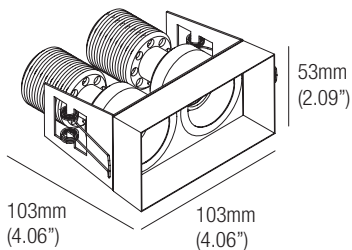


MOON QX120

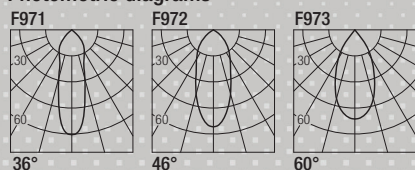
design: Lapo Grassellini

Supply current
Courant d'alimentation
Corriente de alimentación
500mA (V_f 2 x 18V)

Power
Puissance
Potencia
2 x 10W



Photometric diagrams



CCT	Flux _{v2}	CRI	CCT	Flux	CRI
2400K	837 lm	95+	Dim to Warm 1800K-3000K	725 lm	95
2700K	921 lm	98+	Tunable White 2700K-5000K	952 lm	95
3000K	977 lm	98+			
3500K	1016 lm	98+			
4000K	1055 lm	98+			

Code Construction

Construction du code produit
Construcción del código de producto

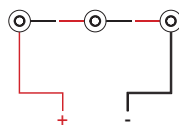
MQX12 | X | XX | 9 | X |

MQX12	X	Finishing Finitions Acabados	XX	Color Temp. Température couleur Temperatura de color	9	X	Beam angle Angle de faisceau Angulo del haz
		1 White Blanc Blanco		24 2400K		S	36°
		5 Black Noir Negro		27 2700K		M	46°
		C Custom Personnalisée Personalizado		30 3000K		W	60°
				35 3500K			
				40 4000K			
				DW Dim Warm			
				TW Tunable White			
				CU Custom Personnalisée Personalizado			

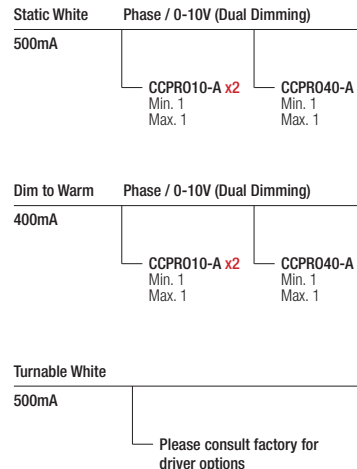
Drivers (Remote)

Alimentateurs
Alimentadores

Series wiring
Câblage en série
Cableado en serie



For other driver options -
including Lutron, Dali and DMX -
please consult factory



Low luminance louvre
Filtre basse luminance
Filtro de baja luminancia

2 x LOH1 White
Blanc
Blanco

2 x LOH1B Black
Noir
Negro

2 x LOH1C Custom
Personnalisée
Personalizado

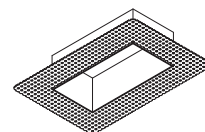


Accessories - Accessoires - Accesorios

MQX12Q.BMK

Plasterboard recessing frame

Boîtier d'encastrement
pour plaques de plâtre
Cajetín para placas de yeso

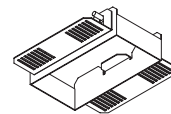


Hole Cut:
57mm x 110mm
(2.24" x 4.33")

MQX12Q.WF

Backmount frame

Pierre/bois montage arrière
Roca/madera montaje trasero

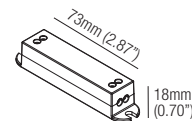


Hole Cut:
57mm x 110mm
(2.24" x 4.33")

Optionals - Accessoires - Accesorios

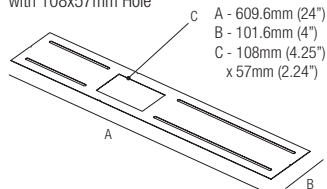
DCVI.B.2

24VDC Constant Voltage to
Constant Current Converter
0-10V / Phase / Dim to Warm
Compatible, 26W



MP-X108

Mounting Plate
with 108x57mm Hole

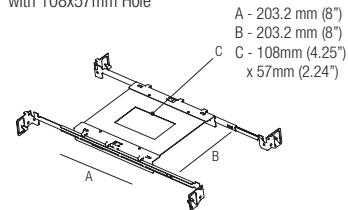


A - 609.6mm (24")
B - 101.6mm (4")
C - 108mm (4.25")
x 57mm (2.24")

T-Bar Installation

XO2108

Mounting Plate
with 108x57mm Hole



A - 203.2 mm (8")
B - 203.2 mm (8")
C - 108mm (4.25")
x 57mm (2.24")

IC Housings

IC086XO2108

Recessed Box for
Insulated Ceiling
with 108x57mm Hole

AT086XO2108

Air Tight Recessed
Box for Insulated
Ceiling with
108x57mm Hole

