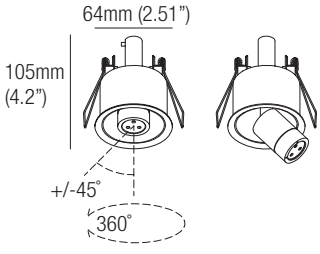


MINILED A R10

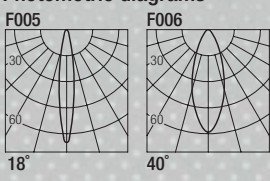
design: Lapo Grassellini

Supply current
Courant d'alimentation
Corriente de alimentación
350mA (V_f 8.7V)

Power
Puissance
Potencia
3W



Photometric diagrams



CCT	Flux	CRI
2700K	267 lm	93
3000K	279 lm	93
3500K	292 lm	93
4200K	309 lm	93

Code Construction

Construction du code produit
Construcción del código de producto

MLDR₁X₁XX₁X₁

MLDR	X	Finishing Finitions Acabados	XX	Color Temp. Température couleur Temperatura de color	X	Beam angle Angle de faisceau Ángulo del haz
	1	White Blanc Blanco	27	2700K	1	18°
	5	Black Noir Negro	30	3000K	2	40°
	C	Custom Personnalisée Personalizado	35	3500K		
			42	4200K		
			CU	Custom Personnalisée Personalizado		

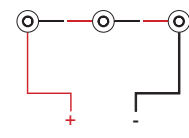
Drivers (Remote)

Alimentateurs
Alimentadores

Static White	Phase / 0-10V (Dual Dimming)	
350mA	CCPRO10-A Min. 1 Max. 3	CCPRO40-A Min. 1 Max. 6

Series wiring

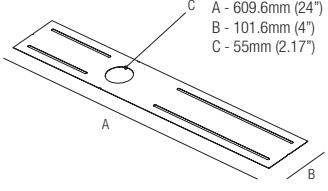
Câblage en série
Cableado en serie



For other driver options - including Lutron, Dali and DMX - please consult factory

MP-R055

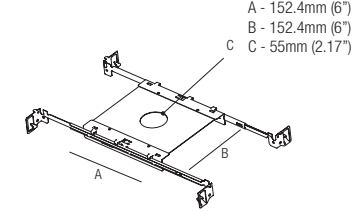
Mounting Plate with 55mm Hole



T-Bar Installation

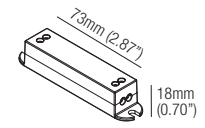
R01055

Mounting Plate with 55mm Hole



DCVI.B.1

24VDC Constant Voltage to Constant Current Converter 0-10V / Phase / Dim to Warm Compatible, 13W



IC Housings

IC086R02055

Recessed Box for Insulated Ceiling with 55mm Hole

AT086R02055

Air Tight Recessed Box for Insulated Ceiling with 55mm Hole

