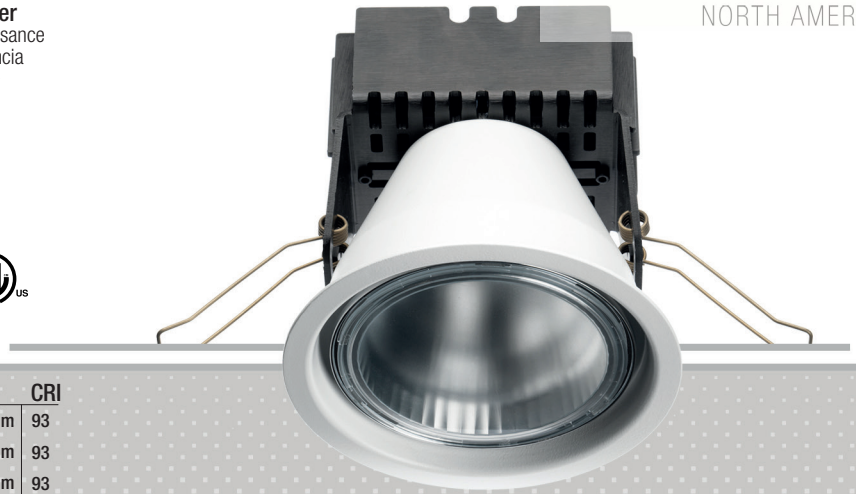
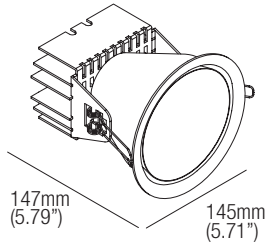


JUNO 40

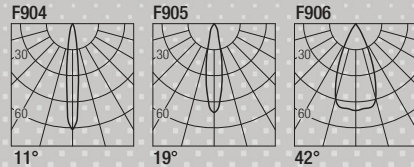
design: Lapo Grassellini

Supply current
Courant d'alimentation
Corriente de alimentación
1050mA (V_r 36V)

Power
Puissance
Potencia
40W



Photometric diagrams



CCT	Flux	CRI
2700K	3400 lm	93
3000K	3660 lm	93
3500K	3780 lm	93
4000K	3900 lm	93

Code Construction

Construction du code produit
Construcción del código de producto

JU4 X XX 9 X

JU4	X	Finishing Finitions Acabados	XX	Color Temp. Température couleur Temperatura de color	9	X	Beam angle Angle de faisceau Ángulo del haz
		1 White Blanc Blanco		27 2700K			S 11°
		5 Black Noir Negro		30 3000K			M 19°
		C Custom Personnalisée Personalizado		35 3500K			W 42°
				40 4000K			
				CU Custom Personnalisée Personalizado			

Drivers (Remote)

Alimentateurs
Alimentadores

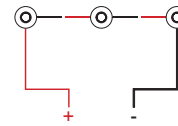
Static White Phase / 0-10V (Dual Dimming)

1050mA

CCPR040-A
Min. 1
Max. 1

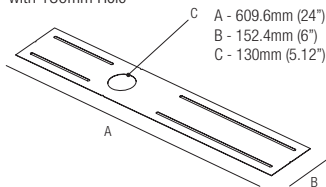
Series wiring

Câblage en série
Cableado en serie



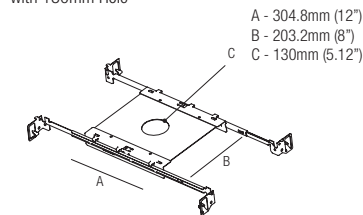
For other driver options - including Lutron, Dali and DMX - please consult factory

MP-R130
Mounting Plate
with 130mm Hole



T-Bar Installation

R04130
Mounting Plate
with 130mm Hole



IC Housings

IC127R04130
Recessed Box for
Insulated Ceiling
with 130mm Hole

AT127R04130
Air Tight Recessed
Box for Insulated
Ceiling with
130mm Hole

