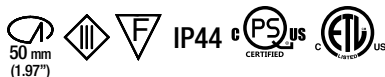
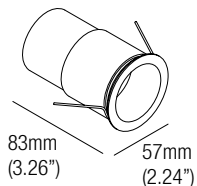


JIMBO 10

design: Roberto Mantovani

Supply current
 Courant d'alimentation
 Corriente de alimentación
500mA (V_I 18V)

Power
 Pouissance
 Potencia
10W



Adjustable optics
 Optique réglable
 Óptica ajustable
10-55°

CCT	Flux	CRI
2700K	860 lm	98+
3000K	912 lm	98+
3500K	949 lm	98+
4000K	985 lm	85
† Dim Warm 1800K-3000K	725 lm	95

Code Construction

Construction du code produit
 Construcción del código de producto

JBW | X | XX | 9

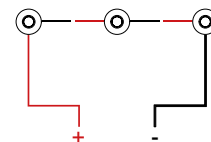
JBW	X	Finishing Finitions Acabados	XX	Color Temp. Température couleur Temperatura de color	9
	1	White Blanc Blanco	27	2700K	
	2	Grey Gris	30	3000K	
	5	Black Noir Negro	35	3500K	
			40	4000K	
			DW	Dim Warm † @ 420mA	

Drivers

Alimentateurs
 Alimentadores

Series wiring

Câblage en série
 Cableado en serie



0-10V

FLEXA-60-PRO-CC-10V

Programmable 60W CC 0-10V Dimming
 Dimming Range: 0.01%
Min 1./Max. 3 Fixtures per Driver

Phase

FLEXA-12-500-CC-ELV

12W 500mA Constant Current
 Dimming Range: 10%
Min. 1/Max. 1 Fixtures per Driver

FLEXA-23-500-CC-ELV

23W 500mA Constant Current
 Dimming Range: 10%
Min 1./Max. 2 Fixtures per Driver

Lutron Forward Phase

LTEA.1

Hi-Lume Forward Phase
 20W 500mA Constant Current
 Dimming Range: 1%
Min. 1/Max. 2 Fixtures per Driver

LTEA.2

Hi-Lume Forward Phase
 30W 500mA Constant Current
 Dimming Range: 1%
Min. 2/Max. 3 Fixtures per Driver

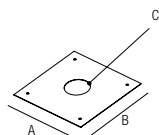
Lutron Ecosystem

PEQ.1

Hi-Lume ECO System
 20W 500mA Constant Current
 Dimming Range: 1%
Min. 1/Max. 2 Fixtures per Driver

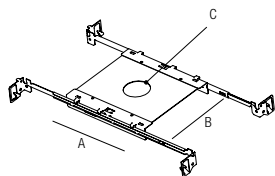
PEQ.0

Hi-Lume ECO System Premier
 20W 500mA Constant Current
 Dimming Range: 0.1%
Min. 1/Max. 2 Fixtures per Driver



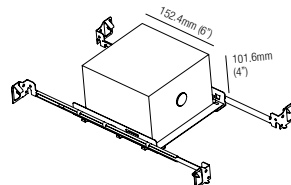
R01050-WOA
 Mounting Plate
 with 50mm Hole

A - 152.4mm (6")
 B - 152.4mm (6")
 C - 50mm (1.97")



R01050
 Mounting Plate
 with 50mm Hole

A - 152.4mm (6")
 B - 152.4mm (6")
 C - 50mm (1.97")



IC064R01050
 Recessed Box for Insulated Ceiling
 with 50mm Hole

AT064R01050
 Air Tight Recessed Box for Insulated
 Ceiling with 50mm Hole