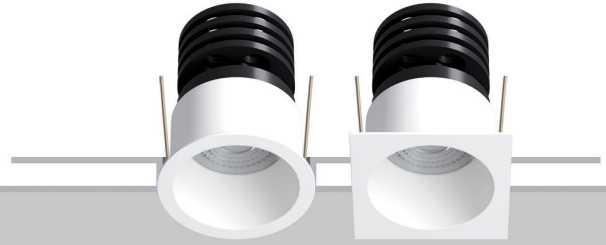
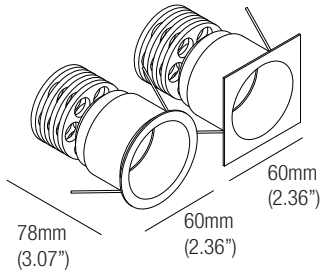


FRANNY 10

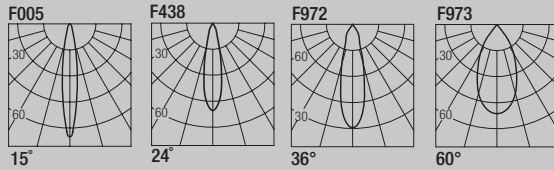
design: Rod&Todd

Supply current
 Courant d'alimentation
 Corriente de alimentación
500mA (V_f 18V)

Power
 Pouissance
 Potencia
10W



Photometric diagrams



CCT	Flux	CRI
2400K	837 lm	95+
2700K	921 lm	98+
3000K	977 lm	98+
3500K	1016 lm	98+
4000K	1055 lm	98+

CCT	Flux	CRI
Dim to Warm 1800K-3000K	725 lm	95
Tunable White 2700K-5000K	952 lm	95

Code Construction

Construction du code produit
 Construcción del código de producto

FN1.X.X.XX.9.X

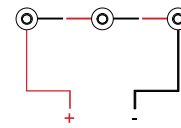
FN1	X	Shape Forma Forme	X	Finishing Finitions Acabados	XX	Color Temp. Température couleur Temperatura de color	9	X	Beam angle Angle de faisceau Ángulo del haz
		1 Round Rond Redondo 2 Square Carré Cuadrado		1 White Blanc Blanco 5 Black Noir Negro C Custom Personnalisée Personalizado		24 2400K 27 2700K 30 3000K 35 3500K 40 4000K DW Dim Warm TW Tunable White CU Custom Personnalisée Personalizado		N 15° S 24° M 36° W 60°	

Drivers (Remote)

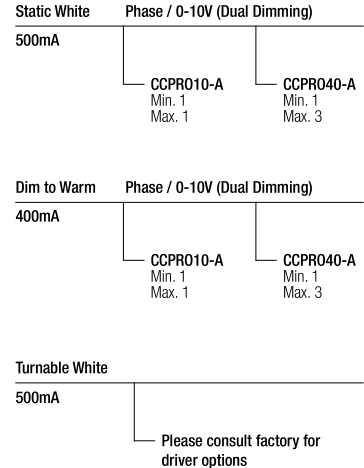
Alimentateurs
 Alimentadores

Series wiring

Câblage en série
 Cableado en serie



For other driver options - including Lutron, Dali and DMX - please consult factory



L101

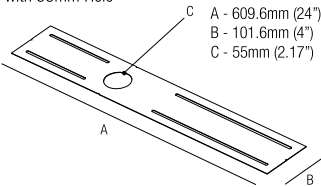
Low luminance louvre
 Filtre basse luminance
 Filtro de baja luminancia



Note: the filter must be ordered together with the lighting fixture
 Note: le filtre doit être commandé en même temps que l'appareil
 Nota: el filtro debe pedirse junto con la luminaria

MP-R055

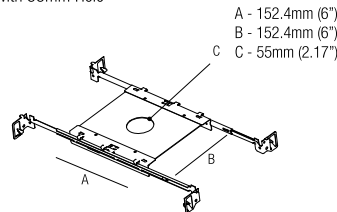
Mounting Plate
 with 55mm Hole



T-Bar Installation

RO1055

Mounting Plate
 with 55mm Hole



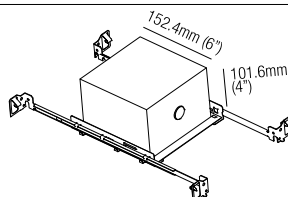
IC Housings

IC064R01055

Recessed Box for Insulated Ceiling with 55mm Hole

AT064R01055

Air Tight Recessed Box for Insulated Ceiling with 55mm Hole



Optionals - Accessoires - Accesorios

DCVI.B.1

24VDC Constant Voltage to Constant Current Converter
 0-10V / Phase / Dim to Warm
 Compatible, 13W

