

# FLY 10

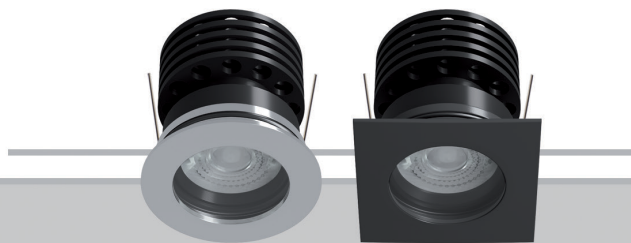
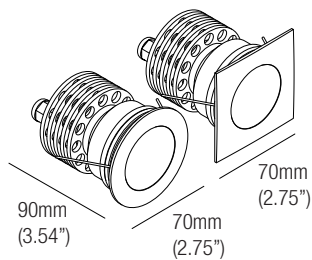
design: Rod&Todd

**Supply current**  
 Courant d'alimentation  
 Corriente de alimentación  
**500mA (V<sub>f</sub> 18V)**

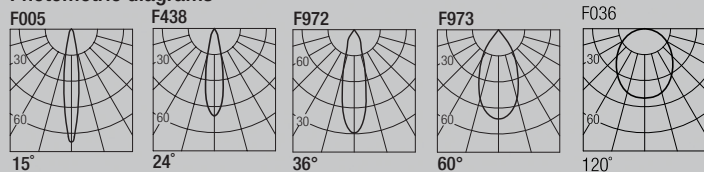
**Power**  
 Pouissance  
 Potencia  
**10W**

# FLEXALIGHTING

NORTH AMERICA



## Photometric diagrams



CCT	Flux	CRI	CCT	Flux	CRI
2400K	837 lm	95+	Dim to Warm 1800K-3000K	725 lm	95
2700K	921 lm	98+			
3000K	977 lm	98+			
3500K	1016 lm	98+			
4000K	1055 lm	98+			

## Code Construction

Construction du code produit  
 Construcción del código de producto

FLY1 | X | XX | 9 | X | X |

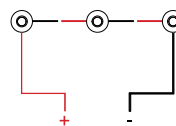
FLY1	X	Shape	Forma	Forme	XX	Color Temp.	Température couleur	Temperatura de color	9	X	Finishing	Finitions	Acabados	X	Beam angle	Angle de faisceau	Ángulo del haz
		<b>1</b>	Round	Rond	Redondo	<b>24</b>	2400K				<b>B</b>	White	Blanc	Blanco	<b>N</b>	15°	
		<b>2</b>	Square	Carré	Cuadrado	<b>27</b>	2700K				<b>N</b>	Black	Noir	Negro	<b>S</b>	24°	
						<b>30</b>	3000K				<b>K</b>	COR-TEN		<b>M</b>	36°		
						<b>35</b>	3500K				<b>Z</b>	INOX	AISI 316L	<b>W</b>	60°		
						<b>40</b>	4000K				<b>C</b>	Custom	Personnalisée	<b>X</b>	120°		
						<b>DW</b>	Dim Warm										
						<b>CU</b>	Custom	Personnalisée	Personalizado								

## Drivers (Remote)

Alimentateurs  
 Alimentadores

## Series wiring

Câblage en série  
 Cableado en serie



For other driver options - including Lutron, Dali and DMX - please consult factory

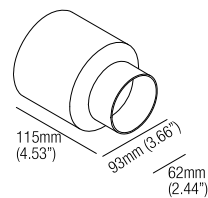
Static White	Phase / 0-10V (Dual Dimming)		
500mA	<table border="1"> <tr> <td>CCPR010-A Min. 1 Max. 1</td> <td>CCPR040-A Min. 1 Max. 3</td> </tr> </table>	CCPR010-A Min. 1 Max. 1	CCPR040-A Min. 1 Max. 3
CCPR010-A Min. 1 Max. 1	CCPR040-A Min. 1 Max. 3		

Dim to Warm	Phase / 0-10V (Dual Dimming)		
400mA	<table border="1"> <tr> <td>CCPR010-A Min. 1 Max. 1</td> <td>CCPR040-A Min. 1 Max. 3</td> </tr> </table>	CCPR010-A Min. 1 Max. 1	CCPR040-A Min. 1 Max. 3
CCPR010-A Min. 1 Max. 1	CCPR040-A Min. 1 Max. 3		

## Optionals - Accessoires - Accesorios

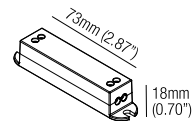
### CSXJ01

Recessing box  
 Boîtier d'encastrement  
 Caja de empotrar



### DCVI.B.1

24VDC Constant Voltage to  
 Constant Current Converter  
 0-10V / Phase / Dim to Warm  
 Compatible, 13W



## L101

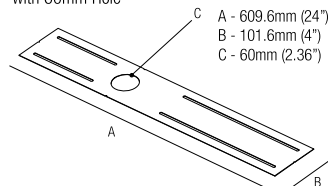
Low luminance louvre  
 Filtre basse luminance  
 Filtro de baja luminancia



Note: the filter must be ordered together with the lighting fixture  
 Note: le filtre doit être commandé en même temps que l'appareil  
 Nota: el filtro debe pedirse junto con la luminaria

### MP-R060

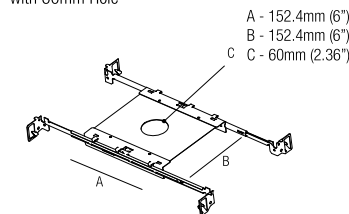
Mounting Plate  
 with 60mm Hole



### T-Bar Installation

#### R01060

Mounting Plate  
 with 60mm Hole



## IC Housings

### IC064R01060

Recessed Box for  
 Insulated Ceiling  
 with 60mm Hole

### AT064R01060

Air Tight Recessed  
 Box for Insulated  
 Ceiling with  
 60mm Hole

