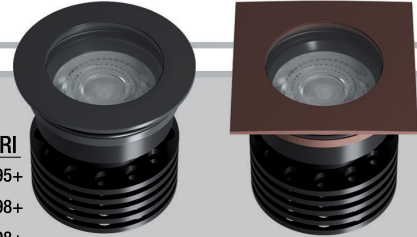
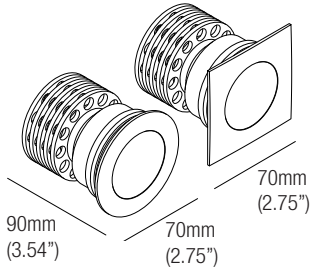


# DIG 10

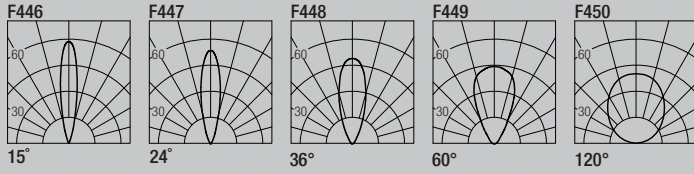
design: Rod&Todd

**Supply current**  
Courant d'alimentation  
Corriente de alimentación  
**500mA (V<sub>f</sub> 18V)**

**Power**  
Puissance  
Potencia  
**10W**



## Photometric diagrams



CCT	Flux	CRI
2400K	837 lm	95+
2700K	921 lm	98+
3000K	977 lm	98+
3500K	1016 lm	98+
4000K	1055 lm	98+
Dim to Warm 1800K-3000K	725 lm	95

## Code Construction

Construction du code produit  
Construcción del código de producto

DIG1 | X | XX | 9 | X | X |

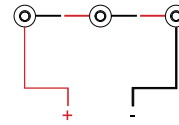
DIG1	X	Shape Forma Forme	XX	Color Temp. Température couleur Temperatura de color	9	X	Finishing Finitions Acabados	X	Beam angle Angle de faisceau Ángulo del haz
		1 Round Rond Redondo		24 2400K			N Black Noir Negro		N 15°
		2 Square Carré Cuadrado		27 2700K			K COR-TEN		S 24°
				30 3000K			Z INOX AISI 316L		M 36°
				35 3500K			Steel Acier		W 60°
				40 4000K			Acero		X 120°
				DW Dim Warm			C Custom Personnalisée Personalizado		

## Drivers (Remote)

Alimentateurs  
Alimentadores

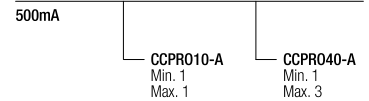
## Series wiring

Câblage en série  
Cableado en serie

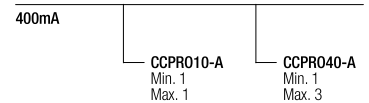


For other driver options -  
including Lutron, Dali and DMX -  
please consult factory

## Static White Phase / 0-10V (Dual Dimming)



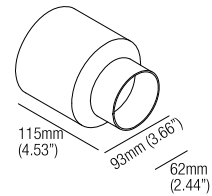
## Dim to Warm Phase / 0-10V (Dual Dimming)



## Optionals - Accessoires - Accesorios

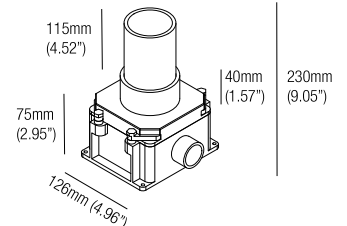
### CSXJ01

**Recessing box**  
Boîtier d'encastrement  
Caja de empotrar



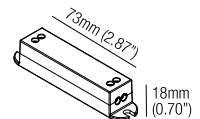
### CSXJ01.CP

**Concrete pour**  
Coulée de béton  
Vertido de hormigón



### DCVI.B.1

24VDC Constant Voltage to  
Constant Current Converter  
0-10V / Phase / Dim to Warm  
Compatible, 13W



## L101

**Low luminance louvre**  
Filtre basse luminance  
Filtro de baja luminancia



**Note:** the filter must be ordered together with the lighting fixture  
**Note:** le filtre doit être commandé en même temps que l'appareil  
**Nota:** el filtro debe pedirse junto con la luminaria