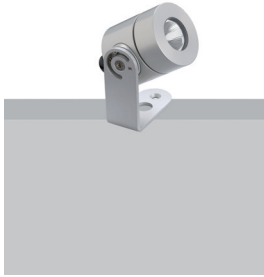


OLU 6
IP-rated projector

design Roberto Mantovani



The Olu range offers IP65 anodized aluminium spotlights, suitable for installation in particularly aggressive environments. Optical quality and fine finishes combine to make a highly reliable product. Can be equipped with anti-glare filter for maximum visual comfort.

La gamme Olu propose des projecteurs IP65 en aluminium anodisé, adaptés pour l'installation dans des milieux particulièrement agressifs. Qualité optique et finitions de qualité fusionnent dans un produit de grande fiabilité. Peuvent être équipés avec filtre anti-éblouissement pour le meilleur confort visuel.

La gama Olu ofrece proyectores IP65 de aluminio anodizado, adecuados para la instalación en ambientes especialmente agresivos. La calidad óptica y los acabados finos se combinan en un producto de gran fiabilidad. Se puede equipar con un filtro antideslumbrante para un máximo confort visual.

IP65 Class 2  made in Canada

Supply current

Courant d'alimentation
Corriente de alimentación
Static White: 500mA (V_{9V})
Dim To Warm: 250mA (V_{18V})

Power

Puissance
Potencia
Static White: 4,5W
Dim To Warm: 4,5W

Series wiring

Câblage en série
Cableado en serie

LED selection

Sélection des LED
Selección del LED
2-Step MacAdam

CRI

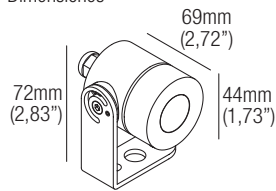
98

Lumens

2400K — 434 lm
2700K — 553 lm
3000K — 579 lm
3500K — 586 lm
4000K — 579 lm
DW — 383 lm

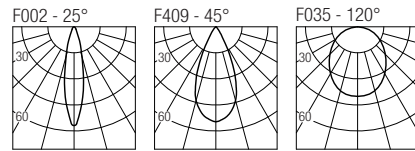
Dimensions

Dimensiones



Photometric diagrams

Diagrammes photométriques
Diagramas fotométricos



Code construction

Construction du code produit
Construcción del código de producto

LU2 X X X

S	M	W				
25°	45°	120°				
24	27	30	35	40	DW	
2400K	2700K	3000K	3500K	4000K	Dim to Warm	
2	5	6	C			
Aluminium	Black	Bronze	Custom			

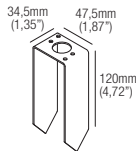
Accessories

Accessoires


Accesorios

CP0022

Earth spike



LH01

Low luminance hex louvre 

XNTC02 Aluminium

XNTC05 Black

XNTC06 Bronze

Antiglare snoot



XXT01

Tree strap



Static White 500mA drivers

Static White Alimentateurs 500mA

Static White Alimentadores 500mA

CCPRO10A-500 (1..2) IP20

Dimming: PHASE - 0-10V

CCPRO40A-500 (1..6) IP20

Dimming: PHASE - 0-10V

Dim to Warm 250mA drivers

Dim to Warm Alimentateurs 250mA

Dim to Warm Alimentadores 250mA

CCPRO10A-250-DW (1..2) IP20

Dimming: PHASE - 0-10V

CCPRO40A-250-DW (1..3) IP20

Dimming: PHASE - 0-10V