

# KOL

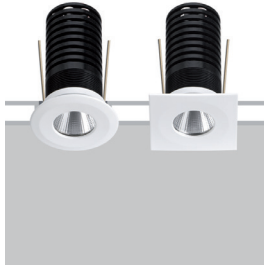
Flush optic downlight

design Roberto Mantovani

The Kol range combines extremely small sizes with luminous fluxes that are suitable for general lighting. Equipped with Fidelity LED it places emphasis on CRI98 and R9 93. Available in eight finishes, three colour temperatures and two extremely clean and performing optics.

La gama Kol combina des dimensions extrêmement réduites à des flux lumineux qui lui permettent de se prêter à des éclairages généraux. Équipé avec LED Fidelity il se caractérise par un CRI98 et R9 93. Disponible dans huit finitions, trois températures couleur et deux optiques extrêmement propres et performantes.

La gama Kol combina dimensiones extremadamente pequeñas con flujos luminosos adecuados para iluminaciones generales. Equipado con LED Fidelity, se caracteriza por un CRI98 y R9 93. Disponible en ocho acabados, tres temperaturas de color y dos ópticas extremadamente sutiles y de alto rendimiento.



IP20

Class 2



JA8 made in Canada

### Supply current

Courant d'alimentation  
Corriente de alimentación  
Static White: 500mA (V<sub>9V</sub>)  
Dim To Warm: 250mA (V<sub>1.8V</sub>)

### Power

Pouissance  
Potencia  
Static White: 4,5W  
Dim To Warm: 4,5W

### Series wiring

Câblage en série  
Cableado en serie

### LED selection

Sélection des LED  
Selección del LED  
2-Step MacAdam

### CRI

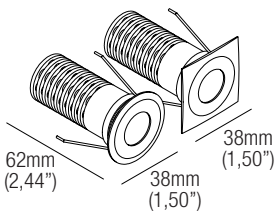
98

### Lumens

2400K — 406 lm  
2700K — 517 lm  
3000K — 541 lm  
3500K — 548 lm  
4000K — 541 lm  
DW — 358 lm

### Dimensions

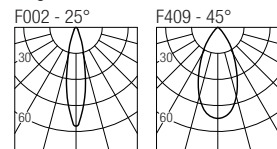
Dimensiones



### Photometric diagrams

Diagrammes photométriques

Diagramas fotométricos

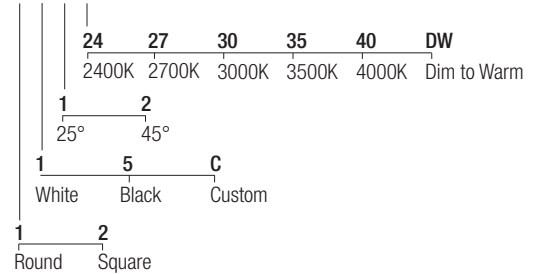


### Code construction

Construction du code produit

Construcción del código de producto

PW X X X X E



### Accessories

Accessoires

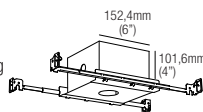
Accesorios

#### AT064R01030

Airtight recessed housing for insulated ceiling

#### IC064R01030

Recessed housing for insulated ceiling



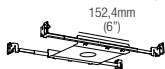
#### MP-R030

Baseplate




#### R01030

T-bar baseplate



#### LH01

Low luminance hex louvre 

### Static White 500mA drivers

Static White Alimentateurs 500mA

Static White Alimentadores 500mA

#### CCPRO10A-500 (1..2) IP20

Dimming: PHASE - 0-10V

#### CCPRO40A-500 (1..6) IP20

Dimming: PHASE - 0-10V

### Dim to Warm 250mA drivers

Dim to Warm Alimentateurs 250mA

Dim to Warm Alimentadores 250mA

#### CCPRO10A-250-DW (1) IP20

Dimming: PHASE - 0-10V

#### CCPRO40A-250-DW (1..3) IP20

Dimming: PHASE - 0-10V